

Aficio®

# SOLUTIONS



RICOH®  
Web SmartNetMonitor

Device  
Management  
Software

**RICOH®**

In today's corporation's, proactive management of the network printing workflow is essential.

Imagine having a Web-based management software solution that provides a control point to remotely monitor, manage or configure networked based printers, multifunction devices, scanners and facsimiles. With Ricoh's Web SmartNetMonitor, IT Managers, Helpdesk Support and Desktop Support personnel will immediately realize a reduction of device administration burdens and an improvement in response time to resolving printing problems.

Web SmartNetMonitor also provides device management services to client PC's via a standard Web browser without needing to install additional software on independent PC's.

Elimination of client set-up time for IT support staff while remotely resolving network-printing problems equates to increased efficiency and time savings. Additionally, the client learning curve diminishes due to the unified Web browser based user interface.

## Device Status is a Mouse "Click" Away

Web SmartNetMonitor implements an easy to use "tree" navigation user interface. The software automatically discovers your network peripherals and displays them in a user definable order. Colored icons clearly indicate the status of each network device. Detailed graphical icons representing Aficio devices can be displayed by clicking on discovered IP addresses. Once the device is selected, a variety of valuable information can be accessed including paper, toner and memory levels, total counter information, e-mail notification setting, device configuration tools and much more!

## What Can Be Monitored?

Aficio multifunction devices, printers, facsimiles, scanners and general system errors can all be monitored with Web SmartNetMonitor! Easy to understand graphical icons are displayed indicating the status of network peripherals. Convenient status display of device toner levels, input paper trays and output paper trays are available and that's only the start! Web SmartNetMonitor can discover non-Aficio devices that conform to the standard MIB RFC (1759) specification. Once discovered, users can access the web-embedded management and status tools of those particular devices.

## E-mail Error Notification

Proactively receive e-mail when your printing device encounters errors! Web SmartNetMonitor's e-mail notification tool works in conjunction with any SMTP compliant mail server to forward device error information to one or more e-mail addresses.

E-mail notification can be set for a singular device or device groups to monitor the following error conditions: Call Service Center, No Toner, Paper Misfeed, No Paper, Cover Open, Miscellaneous Error, Off-Line, Low Toner or Attention Needed.

One or more e-mail addresses can be assigned for each error condition. E-mail error messages provide a wealth of information including: Sender Address, Recipient Address, Subject of E-mail, Error Contents, Error Detail and Device Information. The e-mail error notification includes a live "hot link" enabling direct network access to the device in error if Internet access is available.

Confirm or modify e-mail Address for notice.

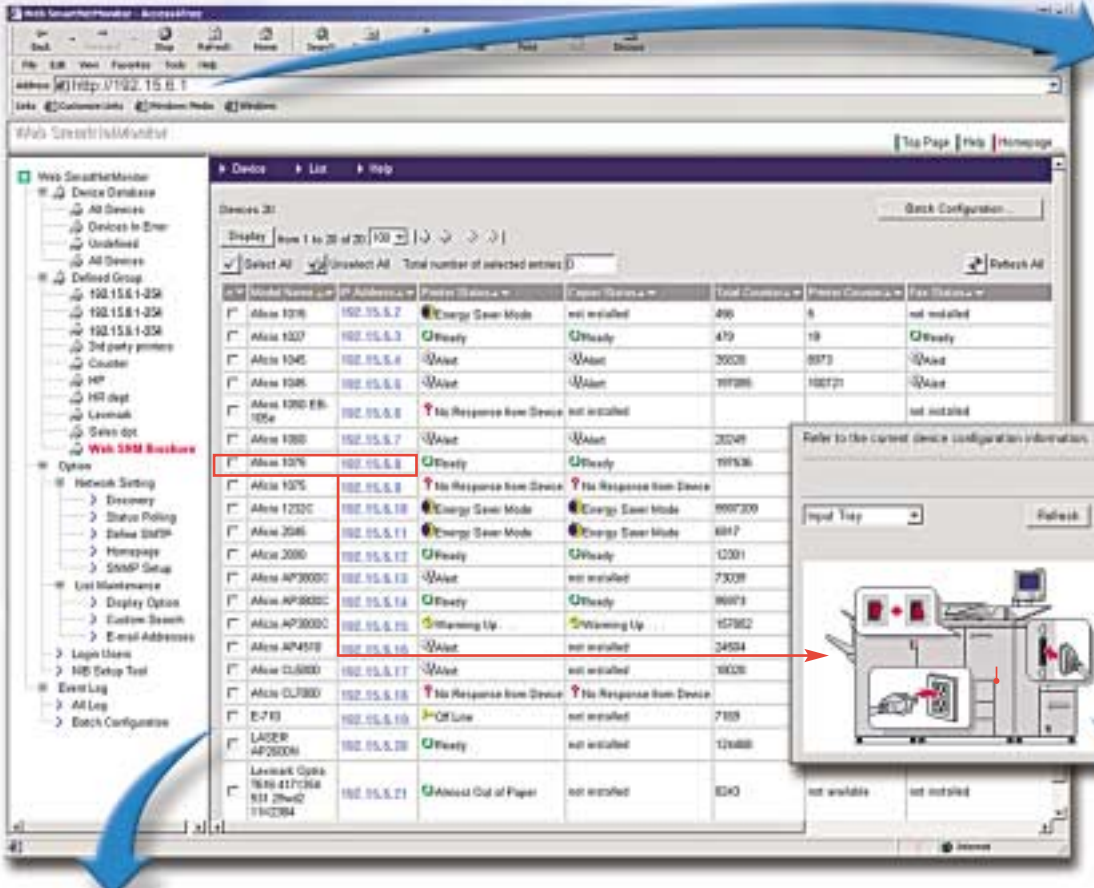
Overwrite Add New Export

Aficio 1013F RDP\_B75465

Error Status	E-mail Address
<input type="checkbox"/> Call Service Center	joe@ab
<input type="checkbox"/> No Toner	mar
<input type="checkbox"/> Paper Misfeed	tomr@ab
<input type="checkbox"/> No Paper	linda@ab
<input type="checkbox"/> Cover Open	wendy@ab
<input type="checkbox"/> Miscellaneous Error	phil@ab
<input type="checkbox"/> Off-Line	ron@ab
<input type="checkbox"/> Low Toner	carl@ab
<input type="checkbox"/> Attention	bob@ab

Proactive E-Mail Error Notification Can Be Sent to Multiple or Single E-Mail Addresses

# Management Software



Secure Access to Web SmartNetMonitor is Initiated by Entering the Servers IP Address and IP Port Number.

Network Peripherals are Automatically Discovered by Utilizing a Common Web-Browser User Interface.

Graphical Status Icons Enable Quick Identification and Troubleshooting of Device Errors.

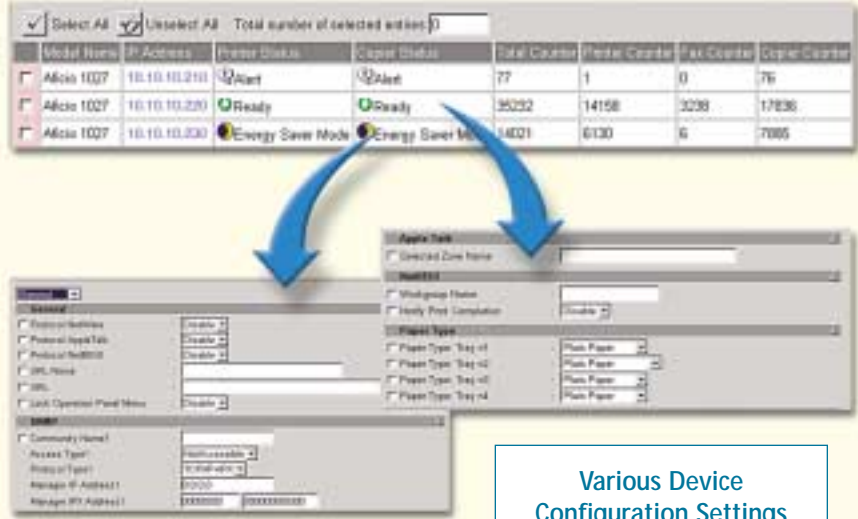
## Batch Configuration

Multiple Devices Can Be Selected for Batch Configuration

Web SmartNetMonitor's batch configuration tool provides an easy way for IT support staff to group and configure multiple devices simultaneously. This feature greatly reduces repetitive configuration burdens and management costs.

Batch configuration results can be viewed by accessing the Events Log Menu. Up to 5,000 operation logs can be stored on the server's database.

The level of configuration is determined by the type of NIB (Network Interface Board) installed on the device. Aficio NIB's are automatically color-coded (red, yellow and green) indicating the level of batch configuration.

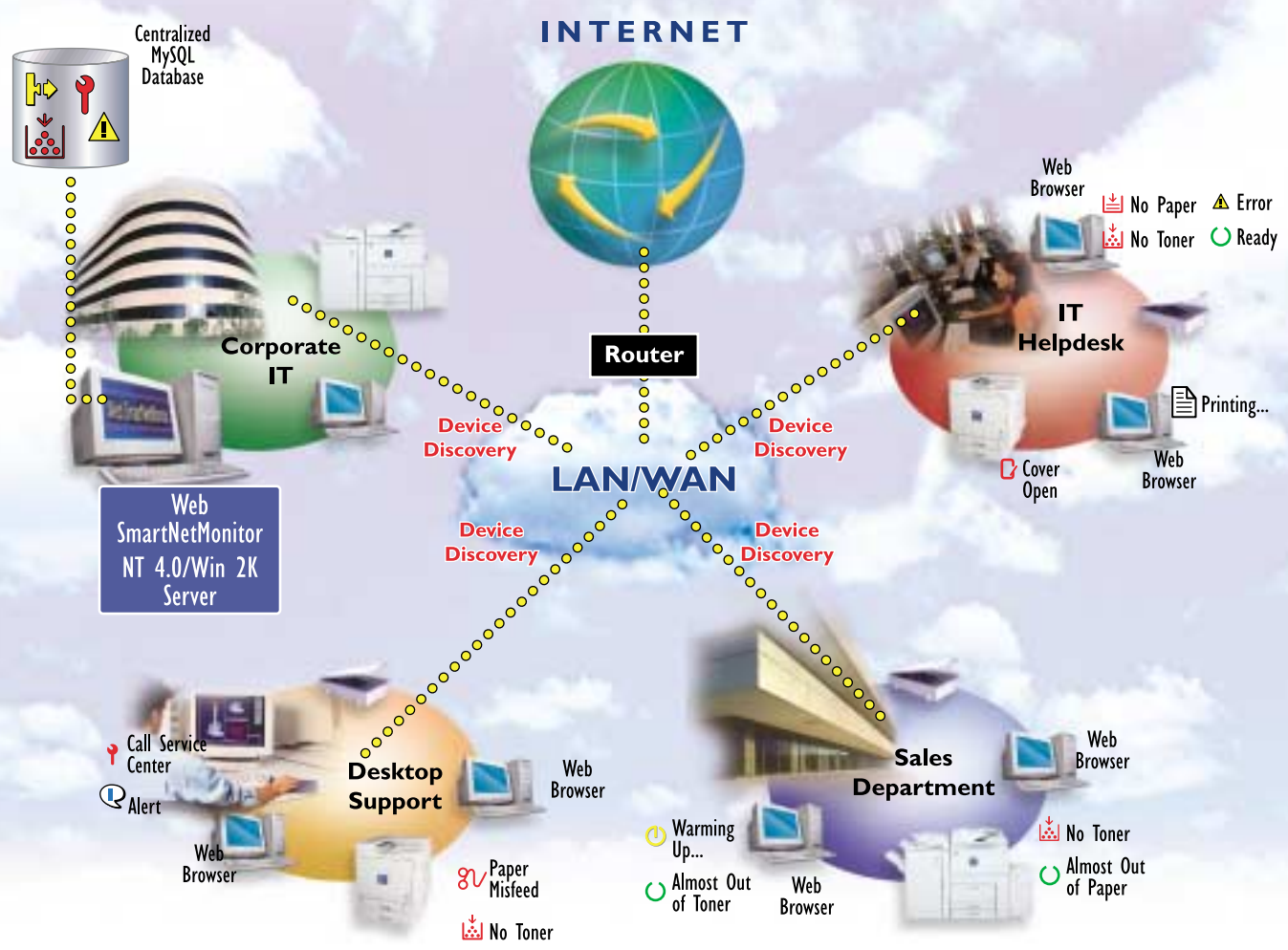


Various Device Configuration Settings Can Be Configured Simultaneously.

# How Does Web SmartNetMonitor Work?

Web SmartNetMonitor is a software application that is installed on a Windows NT or Windows 2000 server. During installation an administrator log-on account, password and IP port number is assigned. The application is self-contained and does not require any additional software to be loaded on the server. Once installed, initial device discovery is performed on user definable network segments on your

enterprise. Device information is recorded and saved in a MySQL database on the server. Web SmartNetMonitor administrators, device administrators and users are able to access the centralized device database utilizing a standard Windows Internet Explorer Web browser.



## Create a More Efficient Network Printing Environment

Web SmartNetmonitor includes a wealth of valuable features that are guaranteed to reduce the amount of print related calls to a corporate IT department. Utilization of advanced diagnostic and device configuration tools will surely increase network printing reliability and performance – all of which result in cost savings!

### ■ Group Management of Devices

Administrators can logically group network-connected devices according to organizational requirements. Groups can be created by location, department, IP address, device capabilities or any other user definable requirement. Up to 1000 groups containing up to 1000 devices, each can be created to ensure proper organization.

### ■ Devices In Error

This feature enables quick determination of network devices currently in an “error” state. With the click of a mouse, the network devices containing errors are quickly isolated and displayed enabling quick assessment of your printing environment.

### ■ Event Logs/Advanced Diagnostics

Event logs provide detailed information that can be used for advanced diagnostics. The “All” log transparently records events by device IP address. The “Batch” log records batch configuration events that are performed when using the batch configuration tool. Both logs can be filtered by date and indicate the severity of the logged event.

### ■ Export Screen Data

Screen data can be exported to a format (.csv) compatible with standard spreadsheet programs. Once exported further analysis of device assets for planning and budgeting can be performed.

### ■ Counter Information

Total Counter, Printer Counter, Copier Counter and Fax Counter are seamlessly recorded and saved.

### ■ Discovery of Non-Aficio Devices

Web SmartNetMonitor has the ability to automatically discover non-Aficio print devices that comply with the standard MIB RFC (1759) specification. Once discovered a user can utilize the web-embedded management tools of that particular device.

### ■ NIB Setup Tool

The NIB (Network Interface Board) setup tool enables configuration options for newly installed devices on the local network segment. Available configuration options include - TCP/IP, NetBEUI, SNMP, Appletalk, NIB Password, Device Name and Device Comment.

### ■ User Log-on Profiles & Passwords

Log-on profiles determine a user’s access privileges. There are three available profiles; Administrator, Device Administrator and User, which determine the level of configuration capability for network devices. Each profile type can be password protected. Device groups and NIB passwords are also available to restrict unauthorized access to network devices.

### ■ Advanced Filter Search

You’re guaranteed to find the network device you’re looking for with Web SmartNetMonitor’s advanced filter searching capabilities. Searching components include – IP Address, MAC Address, Device Name, Black & White / Color, NIB Version, NIB Model, Device Speed, Host Name or Device Comment.

## RICOH® Web SmartNetMonitor System Requirements

### Web SmartNetMonitor Server Requirements

- **Server**
  - CPU: Pentium III 500 MHz or higher
- **Hard Disk**
  - 500 MB free before installation
  - 400 MB free at execution
- **Memory**
  - 256 MB RAM minimum
- **Operating System**
  - Windows NT 4.0 Server (i386):  
Service Pack 6 or later
  - Windows 2000 Server/Advanced:  
Server Service Pack 3 or later
- **Network Protocol**
  - TCP/IP

### Client PC Requirements

- **Operating System**
  - Windows 95/98/98SE/Me
  - Windows NT 4.0 Workstation/Server (i386):  
Service Pack 6 or later
  - Windows 2000 Server/Advanced:  
Service Pack 2 or later
  - Windows XP Home/Professional
- **Network Protocol**
  - TCP/IP
- **Web Browser**
  - Microsoft Internet Explorer 5.01 or later  
(For Windows 95, NT and XP, JavaVM must be installed to use NIB setup tool)
- **Screen Resolution**
  - 800 x 600 or higher (1024 x 768 recommended)

### Printer and Multi-function Device Requirements

- **Network Protocol**
  - TCP/IP
- **Standard MIB**
  - Printer MIB (RFC1759)
  - MIB-II (RFC 1213)
  - Host Resource MIB (RFC 2780)
- **Interfaces**
  - 10/100MB Ethernet (802.x.x compatible)
  - Wireless LAN Devices (802.x.x compatible)
  - IP Over 1384

See your authorized Ricoh sales representative for details.



Ricoh is a registered trademark of Ricoh Company, Ltd.  
Windows® and Windows® 3.1/95/98/Me/NT 4.0/2000/XP are registered trademarks of Microsoft Corporation.  
All other trademarks are the property of their respective owners.

©Ricoh Corporation

**RICOH®**  
Image Communication

Ricoh Corporation • Five Dedrick Place, West Caldwell, NJ 07006  
Phone: (973) 882-2000 • Website: <http://www.ricoh-usa.com>

CA-0363